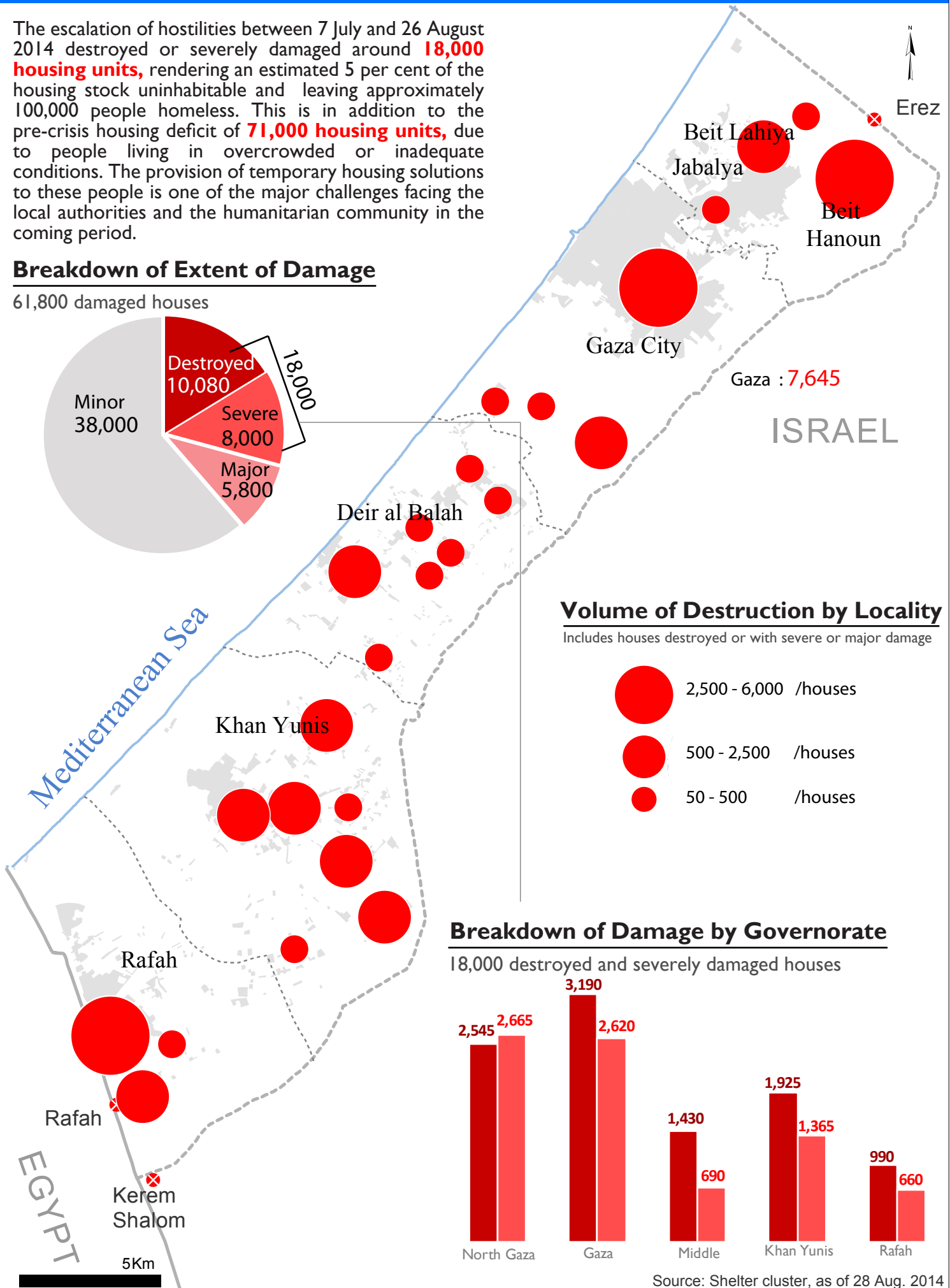
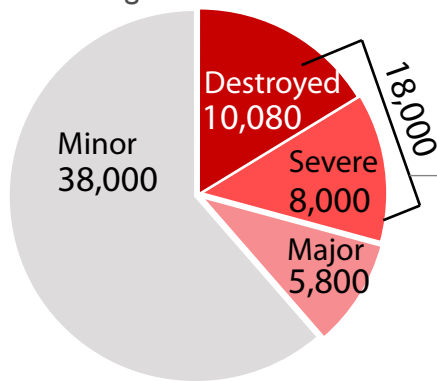


The escalation of hostilities between 7 July and 26 August 2014 destroyed or severely damaged around **18,000 housing units**, rendering an estimated 5 per cent of the housing stock uninhabitable and leaving approximately 100,000 people homeless. This is in addition to the pre-crisis housing deficit of **71,000 housing units**, due to people living in overcrowded or inadequate conditions. The provision of temporary housing solutions to these people is one of the major challenges facing the local authorities and the humanitarian community in the coming period.

Breakdown of Extent of Damage

61,800 damaged houses



Breakdown of Damage by Governorate

18,000 destroyed and severely damaged houses

